

Explore the Full Project on EdCity

LATTE integrates HKDSE English reading paper analysis with AI and big data technology to provide diverse reading materials, text genres, question types, difficulty levels and past paper practice.

- Trains 6 real exam skills, including error analysis with instant AI feedback.
- Predicts HKDSE grades using HKEAA benchmarks to identify and target student strengths and weaknesses.
- Adapts to all bands with levelled practices and personalised learning paths.
- Integrates seamlessly into school timetables and curriculum.



Free Trial



Project Website

Contact Us



Hong Kong Office: (+852) 3188 2600
Shenzhen Office: (+86) 0755 8366 4290



(+852) 6208 0747

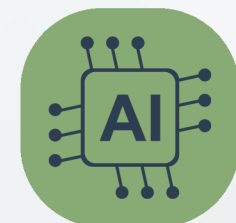


wecare@wiseman.com.hk

LATTE

Learning Assessment Teaching Technology for Excellence

Your AI-Powered Learning and Teaching Partner for the HKDSE



e-Learning Ancillary Facilities Programme

Quality Education Fund

Proudly Presented by:



仁濟醫院
Yan Chai Hospital

Funded by:



優質教育基金
Quality Education Fund

Powered by:

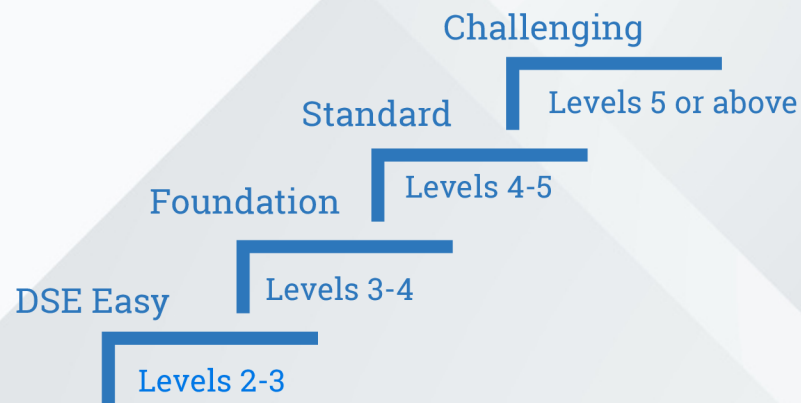


仁濟醫院
Yan Chai Hospital



優質教育基金
Quality Education Fund





LEARNING

HKDSE Mock Practice Repository for All Levels (70+ sets)

ASSESSMENT

Instant Grade Projection and Personalised Learning Path to Level Up

TEACHING

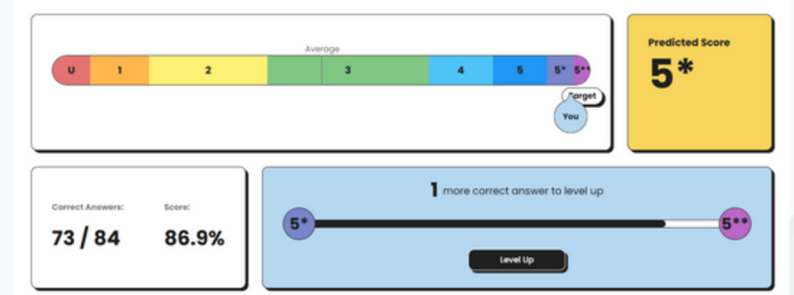
Instant Performance Analysis and Real-time Display of Students' Answers

TECHNOLOGY

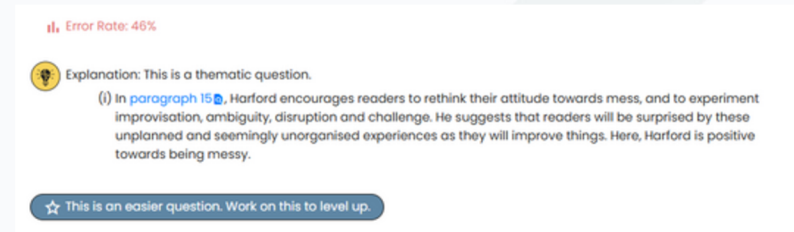
Real-time Class and Individual Skills Report

EXCELLENCE

Detailed Answer Explanations and Skill-focused Practices for Further Consolidation



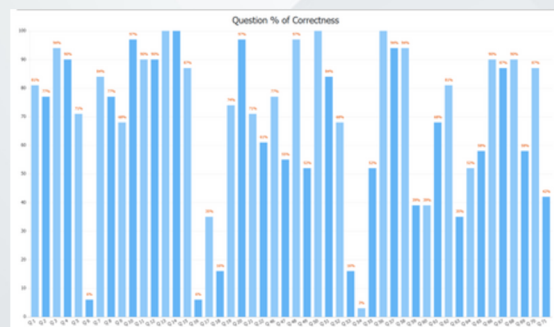
Instant Grade Projection
Benchmarking against the HKDSE Standard



Personalised Learning Path to Level Up



Real-time Display of Students' Answers



Instant Performance Analysis



Students' Skills Report on Specific Reading Skills such as Factual, Reference, Vocabulary, Inference, Thematic, and more...



Detailed answer explanations prepared by experienced secondary school teachers and HKDSE markers

Demo Video

