

# What Else?

## INTERESTED IN CUSTOMISED SCHOOL-BASED SOLUTIONS?

We design tailored educational strategies that **align with your curriculum** and **unique priorities** - ensuring the perfect fit for your students and teaching team.

You can enhance your teaching experience with customised features including **school-based content** and **in-depth analysis**, all designed to empower your teaching strategies and improve student learning outcomes.

## Reach Out to Discover More

Arrange personalised demonstrations to see our solutions in action.

## Contact Us



Hong Kong Office: (+852) 3188 2600  
Shenzhen Office: (+86) 0755 8366 4290



(+852) 6208 0747



wecare@wiseman.com.hk

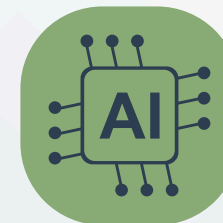


Ask for Trial

# LATTE

Learning Assessment Teaching Technology for Excellence

## Your AI-Powered Learning and Teaching Partner for the HKDSE



e-Learning Ancillary Facilities Programme  
Quality Education Fund

Proudly Presented by:



仁濟醫院  
Yan Chai Hospital

Funded by:



優質教育基金  
Quality Education Fund

Powered by:



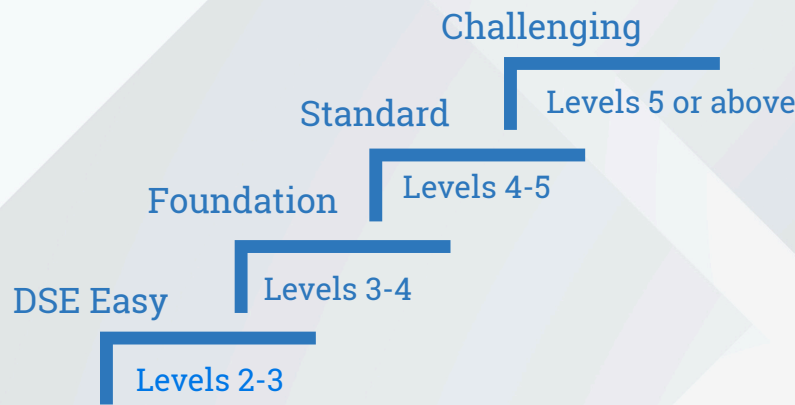
仁濟醫院  
Yan Chai Hospital



優質教育基金  
Quality Education Fund



Official past HKDSE papers from the HKEAA, available for use by schools with a full license.



Students

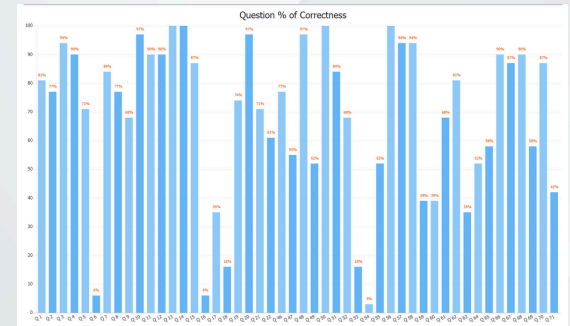
Questions

1	Student 1	1	2	3	4	5	6	7	8	9	10	11	12	13	14	15	16	17	18	19	20	
3	Student 3	1	2	3	4	5	6	7	8	9	10	11	12	13	14	15	16	17	18	19	20	
4	Student 4	1	2	3	4	5	6	7	8	9	10	11	12	13	14	15	16	17	18	19	20	
8	Student 8	1	2	3	4	5	6	7	8	9	10	11	12	13	14	15	16	17	18	19	20	
14	Student 14	1	2	3	4	5	6	7	8	9	10	11	12	13	14	15	16	17	18	19	20	
16	Student 16	1	2	3	4	5	6	7	8	9	10	11	12	13	14	15	16	17	18	19	20	
18	Student 18	1	2	3	4	5	6	7	8	9	10	11	12	13	14	15	16	17	18	19	20	
20	Student 20	1	2	3	4	5	6	7	8	9	10	11	12	13	14	15	16	17	18	19	20	
21	Student 21	1	2	3	4	5	6	7	8	9	10	11	12	13	14	15	16	17	18	19	20	
26	Student 26	1	2	3	4	5	6	7	8	9	10	11	12	13	14	15	16	17	18	19	20	
28	Student 28	1	2	3	4	5	6	7	8	9	10	11	12	13	14	15	16	17	18	19	20	
29	Student 29	1	2	3	4	5	6	7	8	9	10	11	12	13	14	15	16	17	18	19	20	
30	Student 30	1	2	3	4	5	6	7	8	9	10	11	12	13	14	15	16	17	18	19	20	

Correct Attempt

Wrong Attempt

Real-time Display of Students' Answers



Instant Performance Analysis

## LEARNING

HKDSE Practice Repository for all Levels (100+ sets)

## ASSESSMENT

Instant Grade Projection and Personalised Learning Path to Level Up

## TEACHING

Instant Performance Analysis and Real-time Display of Students' Answers

## TECHNOLOGY

Real-time Class and Individual Skills Report

## EXCELLENCE

Detailed Answer Explanations and Skill-focused Practices for Further Consolidation

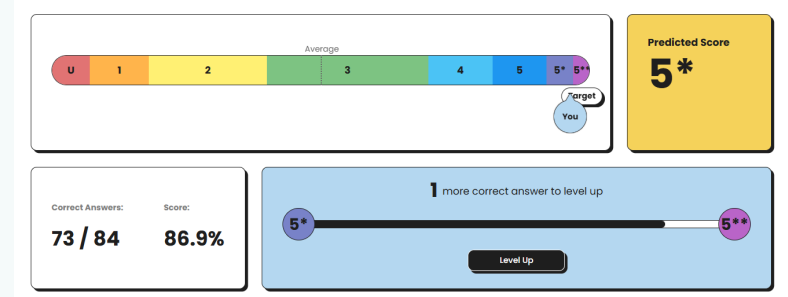
64. Why does the writer describe the harvesting of honey from beehives as a 'drama'?

✗ It's exciting and full of surprises → the harvest is unpredictable / not the same every year / uncertain / has ups and downs

Error Rate: 58%

Explanation: This is a factual question. A drama refers to a situation that is unexpected and with excitement. The writer describes the harvesting of honey from beehives as a drama because according to paragraph 4, harvest does not happen every year, or even often. Some years he gets nothing but this year he gets a lot. This is unpredictable and there are uncertainties, which share the characteristics of a drama.

Detailed answer explanations prepared by experienced secondary school teachers and HKDSE markers



Instant Grade Projection  
Benchmarking against the HKDSE Standard

Error Rate: 46%

Explanation: This is a thematic question.

(i) In paragraph 15, Harford encourages readers to rethink their attitude towards mess, and to experiment improvisation, ambiguity, disruption and challenge. He suggests that readers will be surprised by these unplanned and seemingly unorganised experiences as they will improve things. Here, Harford is positive towards being messy.

☆ This is an easier question. Work on this to level up.

Personalised Learning Path to Level Up



Students' Skills Report on Specific Reading Skills such as Factual, Reference, Vocabulary, Inference, Thematic, and more...

Demo Video

